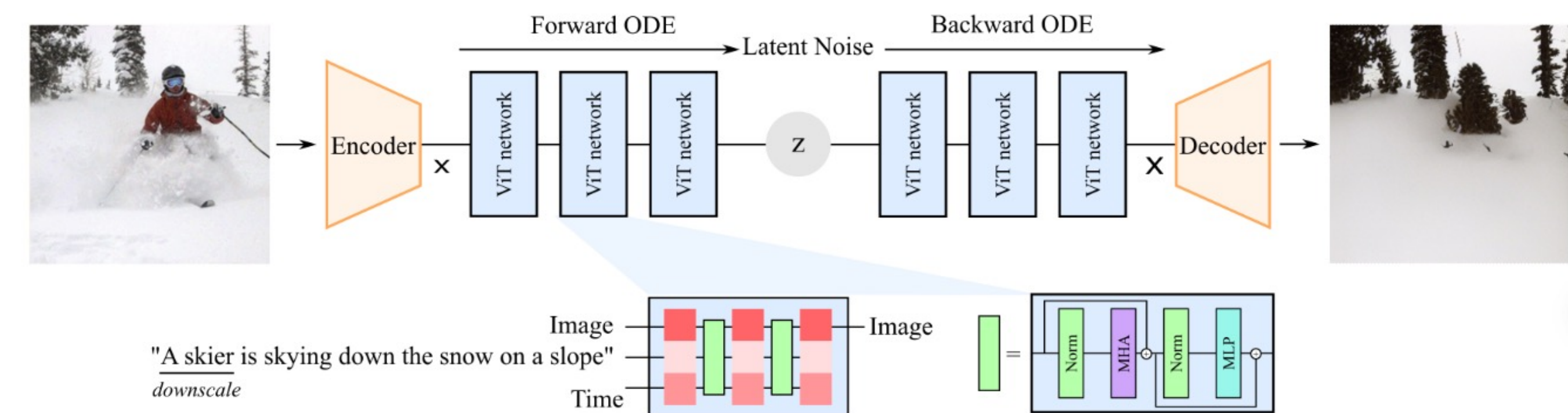




Transformer-based Flow Matching



Contribution 1: We find an editing space named u -space that can perform controllable, accumulative and composable editing.

Contribution 2: A local-prompt for replacing, adding, removing, and rescaling prompts.

Algorithm 1 Semantic direction manipulation in u -space.

Input: parameter of pretrained network θ , fix step ODE solver ODE_f with step N , adaptive ODE solver ODE_a , target attribute k .

Output: An edited image x_1

$x_0 \sim \mathcal{N}(0, I)$ a unit Gaussian random variable

$m = 0$

for $i = 1, 2, \dots, M$ **do**

for $j = N, N - 1, \dots, 1$ **do**

$u_{t_{j-1}}, x_{t_{j-1}} = ODE_f(x_{t_j}; \theta)$; where $t_j = \frac{j}{N}$

end for

end for

for $j = N, N - 1, \dots, 0$ **do**

 Calculate $s_{t_j}^k$ by Equation (5)

end for

while $t_m \leq 1$ **do**

if $0 < t < t_{edit}$ **then**

 Interpolate semantic direction s_t^k by Equation (8)

$x_{t_{m+1}}, t_{m+1} = ODE_a(x_{t_m}, u_{t_m} + w \cdot s_{t_m}^k, t_m; \theta)$

else

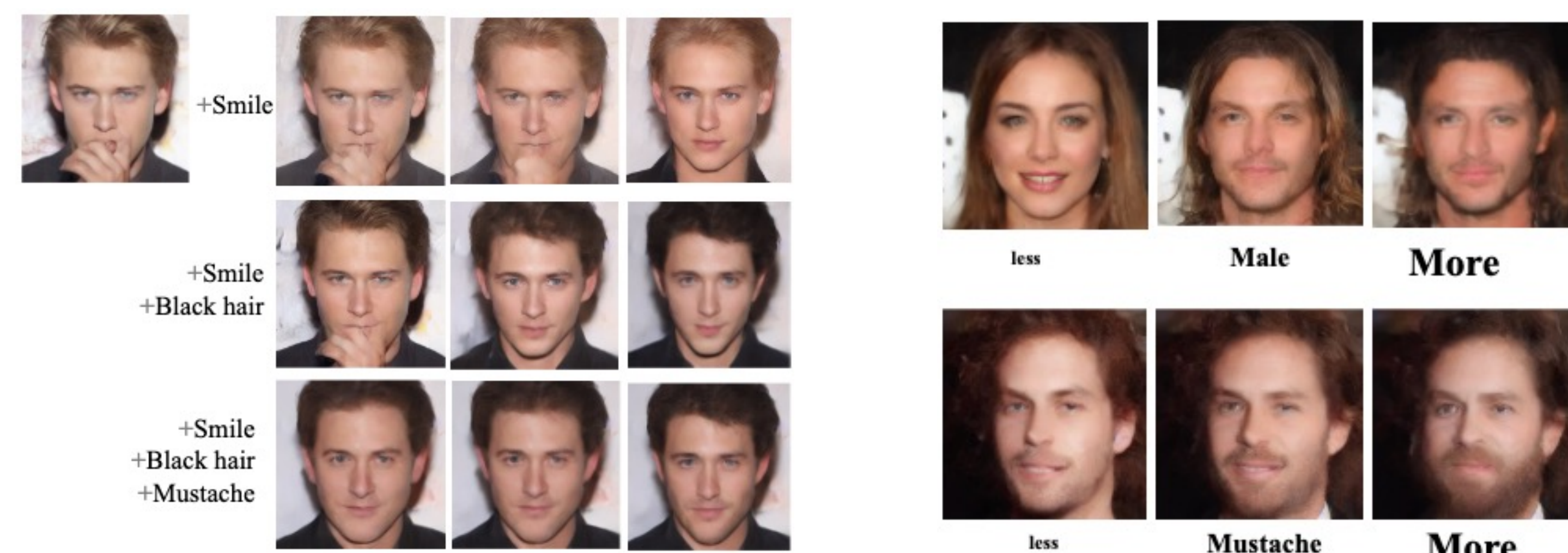
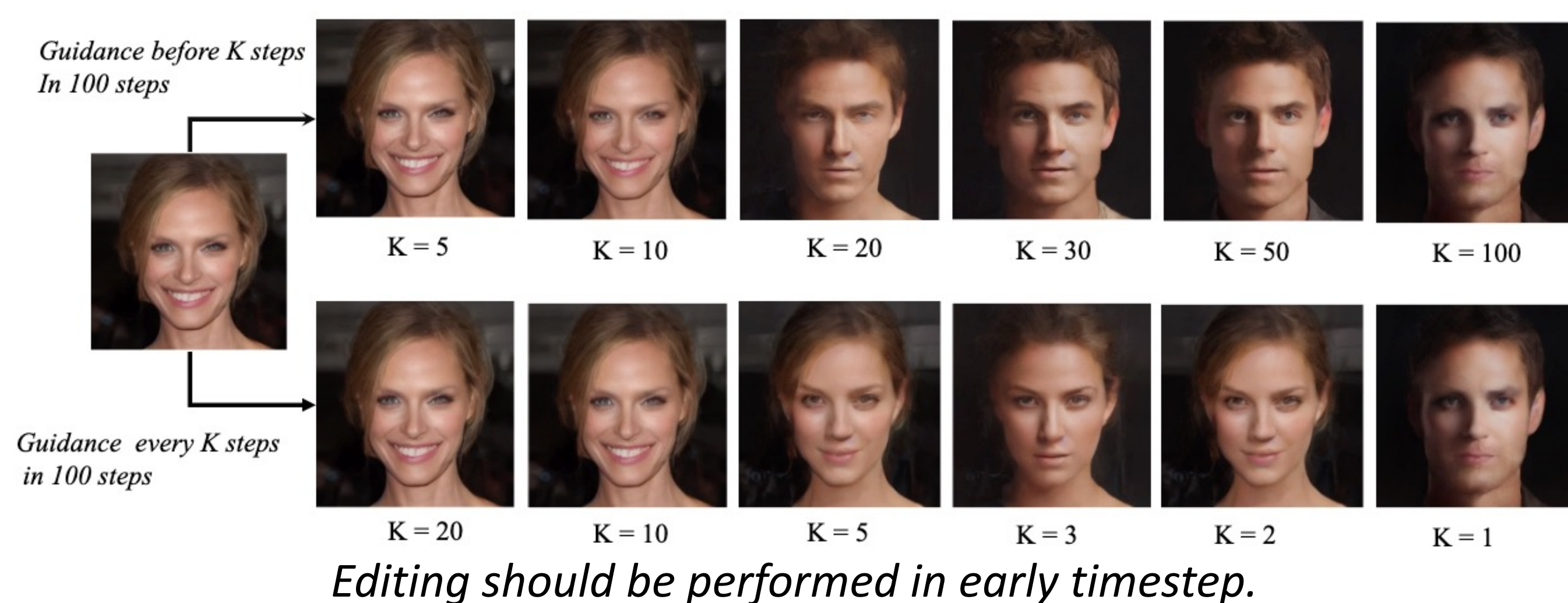
$x_{t_{m+1}}, t_{m+1} = ODE_a(x_{t_m}, u_{t_m}, t_m; \theta)$

end if

end while

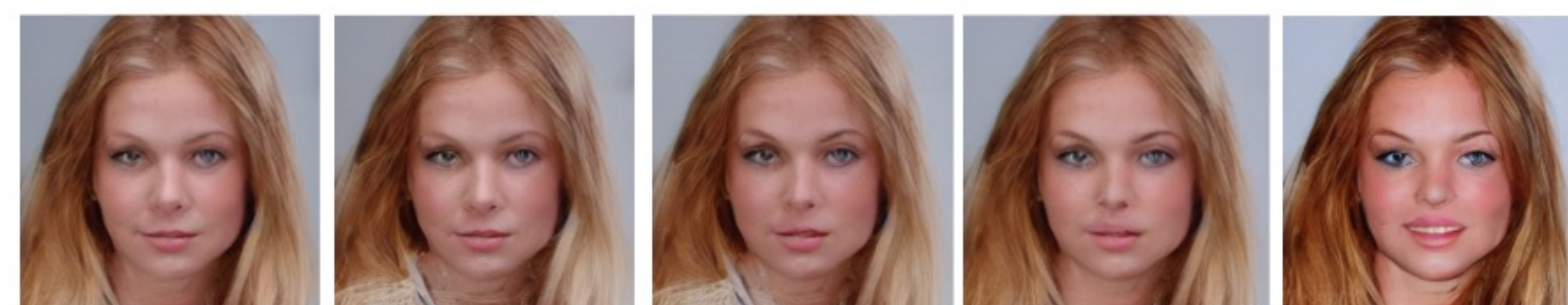
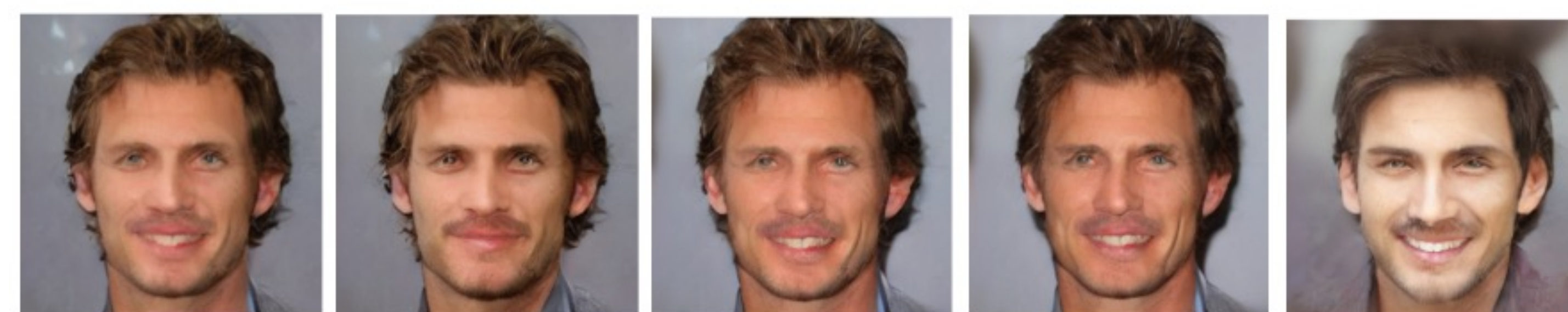
Return x_1

Global Editing by Manipulating Direction



Editing can be conducted in a controllable, accumulative and composable manner.

Local Editing by Local-Prompt



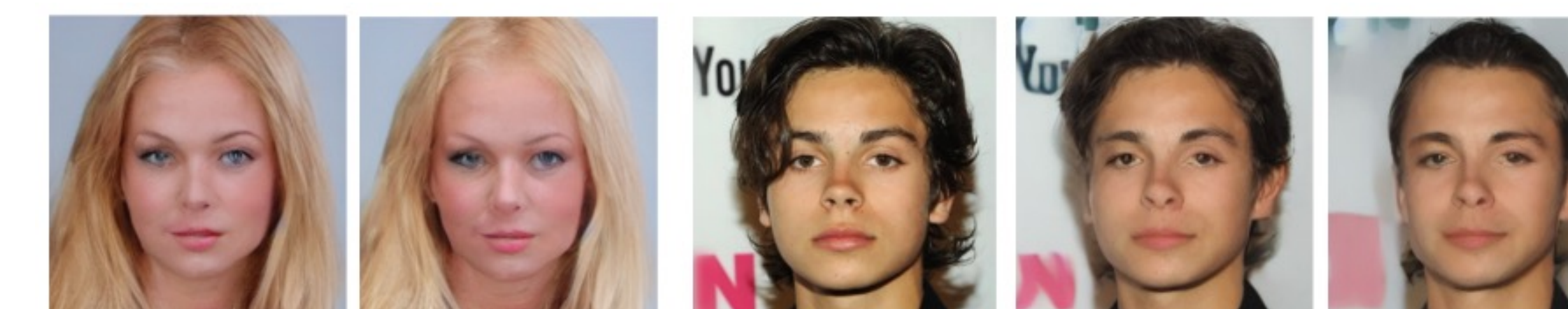
She has brown hair, she is young, she has mouth slightly open, she has a pointy nose, she has rosy cheeks.



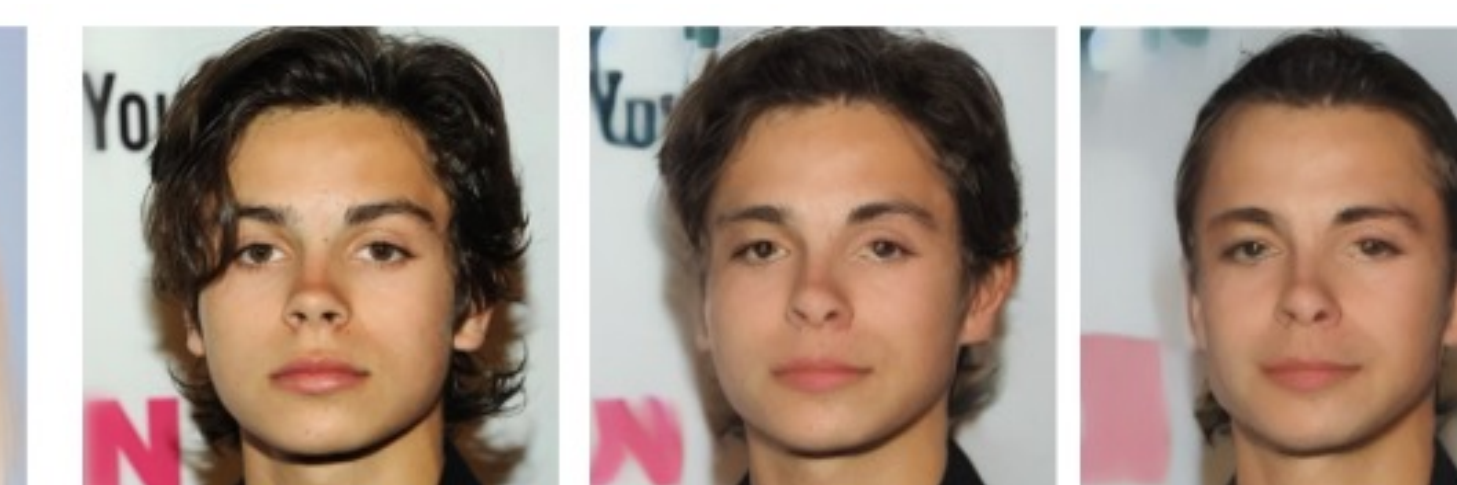
The man has brown hair, He has a mustache, he is smiling, he has bushy eyebrows, he has pale skin.



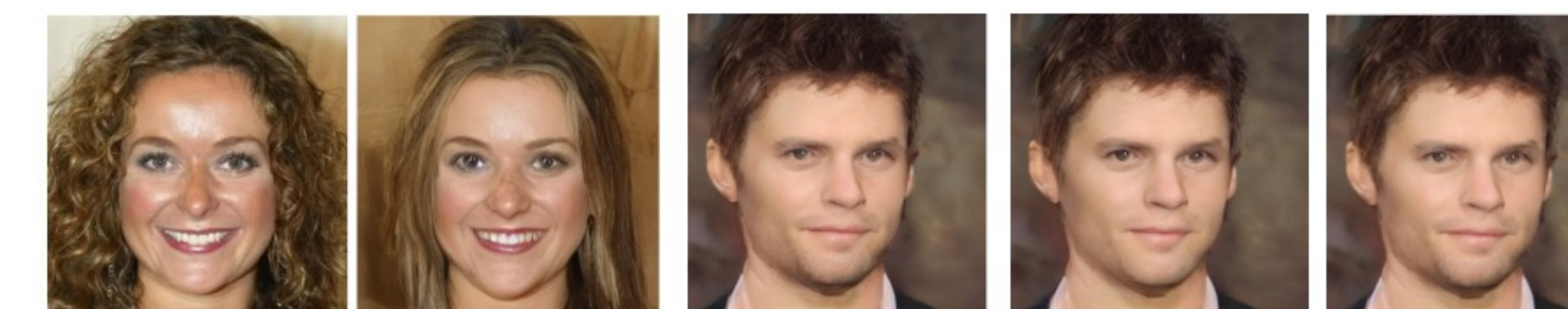
He is smiling, He has a mustache, The man has brown hair, he has bushy eyebrows, he has pale skin.



She has white hair



This person is young and has wavy hair, bushy eyebrows



This person has wavy hair, rosy cheeks, high cheekbones.

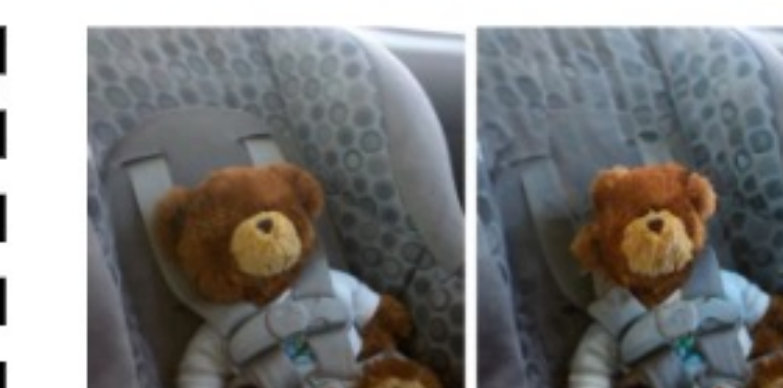
A man with a wavy hair, he has a beard, he has a beard



A stop sign is sitting on the side of a rural road.



A dog that is in the air with a frisbee.



Stuffed teddy bear strapped into child safety seat.



A large pile of oranges lying next to some apples.



People walking under a large clock and people sitting under a large umbralle



A train coming out of a bridge next to a river.